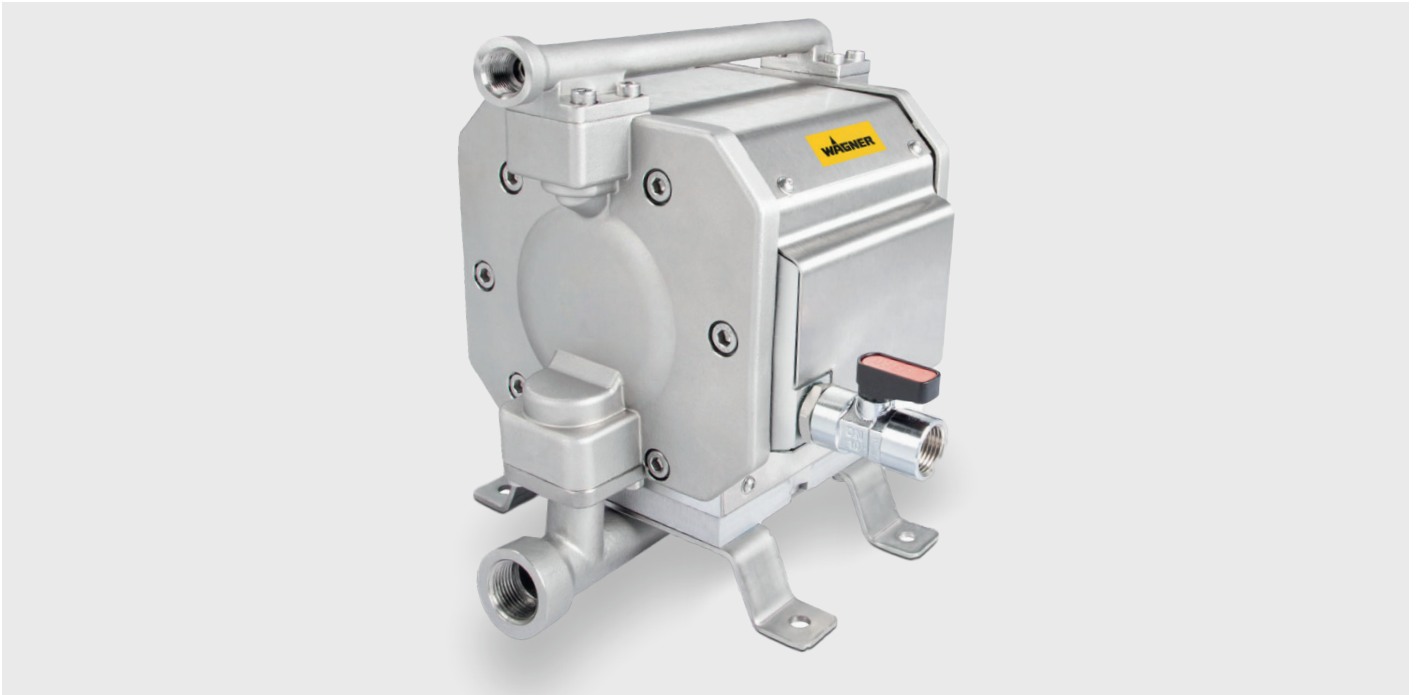


The powerful Unica 3-125 double diaphragm pump for airspray applications enables significant material and resource savings.



The universal pump is suitable for all airspray or supply applications where the requested material pressure of a 1:1 double diaphragm pump is not high enough. The Unica 3-125 offers higher pressure for reliable delivery of coating materials with high solids content and higher viscosity. It is suitable for systems with multiple airspray gun operation and long hose lines or recirculating systems where the material is constantly in motion.

Additionally the higher pressure allows selection of smaller hose diameters. This reduces the amount of unused material in the system significantly and thus saves costs and time during flushing and material change.

Flexible connections

Flush-optimized version for stub line operation with $\frac{3}{8}$ " outlet and $\frac{1}{2}$ " inlet or standard variant for recirculating operation with $\frac{3}{4}$ " inlet and outlet.

Powerful

Suitable for applications with up to 16 airspray guns or 4 l/min and >15 bar at pump outlet.

Reliable results

The pump starts and runs reliably even at 250 cm³/min and 1 bar air supply.

Economical flushing

Small internal volumes and cavity-free design for low flushing fluid consumption during color change and cleaning ($\frac{3}{8}$ " version).



Robust

Stable design and low-wear operation due to durable pneumatic parts, diaphragms and valves.

Easy to integrate

Compact and lightweight for easy integration into the paint kitchen. Beside the air supply unit, the pump fits into the modular WAGNER system of holders, suction systems, material filters, circulators and relief combinations.

Data acquisition for predictive maintenance

Electronic real-time transmission of pump strokes for recording and predictive maintenance call in the system control.

Technical data

Characteristics	Unica 3-125 3/8" HZ	Unica 3-125 3/4" HZ
Pressure ratio	3.5:1	3.5:1
Operating pressure (max. static)	21 bar	21 bar
Flow capacity (dynamic, water)	3 l/min at 19 bar	3 l/min at 19 bar
Material inlet	G 1/2" - I	G 3/4" - I
Material outlet	G 3/8" - I	G 3/4" - I
Air supply	G 1/2" - I (max. 6 bar)	G 1/2" - I (max. 6 bar)
Weight	15 kg	15 kg
Material wetted parts	Stainless steel, PTFE	Stainless steel, PTFE

The version with G 3/8" outlet thread is optimized for installations in stub line operation and fast color changes.
The version with large G 3/4" connections is more intended for operation in circulation lines without color change.

Typical application areas

- For large distances between paint kitchen and application
- Also suitable for higher viscosity and thixotropic materials
- Supply of several guns simultaneously
- Circulation systems with higher viscosity materials
- Supply of mixing systems with base coats and catalysts

