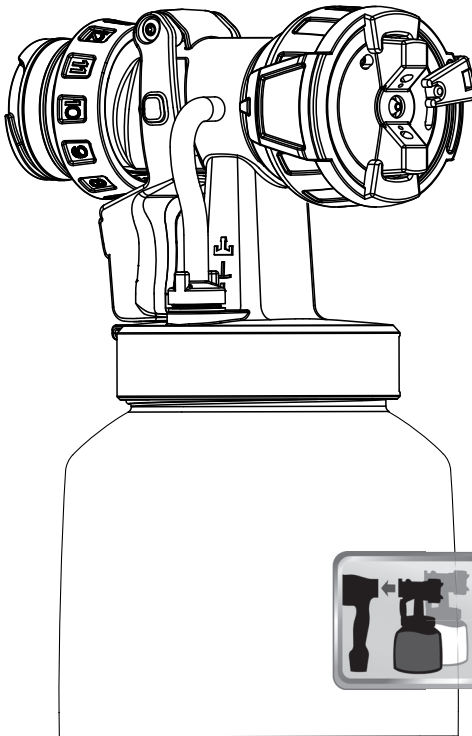


WAGNER

FineSpray

操作手册 1

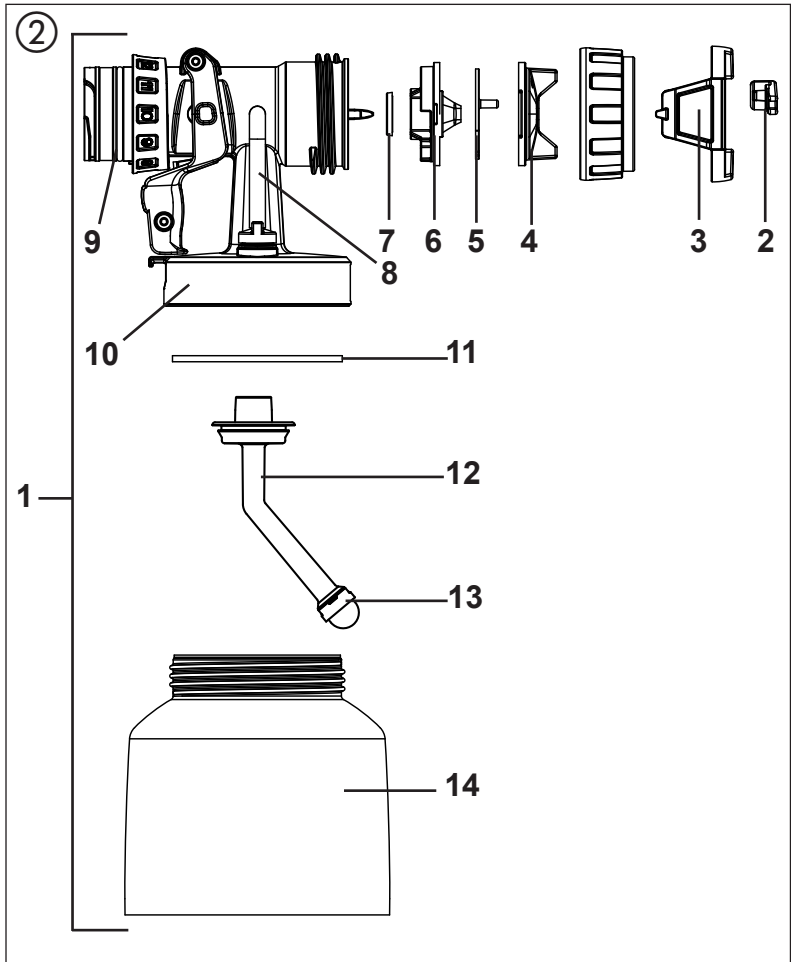
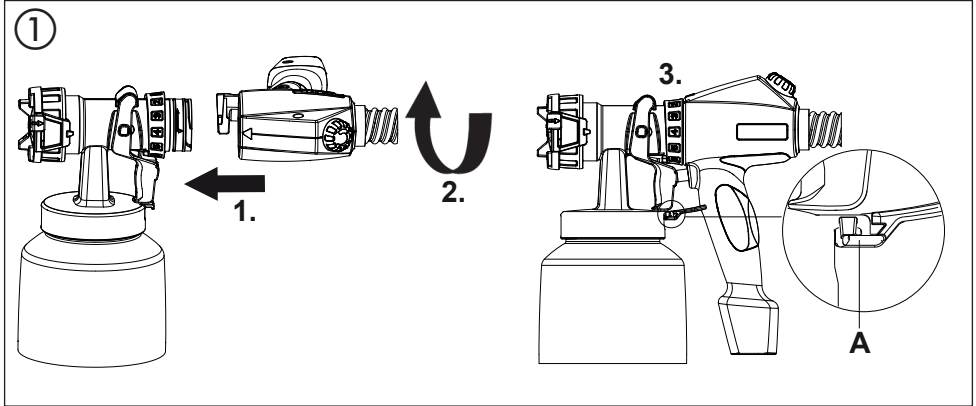
Operating manual 4



2330 080

07/2012

© Copyright by J.Wagner GmbH



使用附加装置前，请阅读本操作说明，并熟悉基本单元的操作说明。基本单元的安全操作说明适用于本精细喷涂附加装置。

精细喷涂附加装置是专为低粘度材料施工而开发的设备，可与CLICK&PAINT喷漆系统的所有设备一起使用。

适合使用的涂料

溶剂类、釉料、浸渍剂、油剂和其他低粘度材料。

不适合使用的涂料

粘稠材料

内墙油漆（乳液和乳胶漆）

含有高磨料成分、幕墙油漆、苛性碱溶液和酸性涂层物质的材料。

闪点低于21°C的材料。

涂料准备



请遵循油漆罐或技术说明书上的制造商涂料使用说明的要求。

精细喷涂系统的无故障操作的绝对先决条件为涂料无杂质。如对涂料纯度有任何疑问，最好先用细筛进行过滤。

涂料	处理	备注
溶剂型清漆	按照制造商使用说明的要求	
水溶性清漆	按照制造商使用说明的要求	
媒染剂、釉料、浸渍剂、油剂	未稀释	使用红色进料管过滤器
透明清漆、合成瓷漆、色漆、醇酸树脂清漆	按照制造商使用说明的要求	
底漆、散热漆、锤纹瓷漆	按照制造商使用说明的要求	
防锈漆、特效漆	按照制造商使用说明的要求	
多彩漆、质感漆	按照制造商使用说明的要求	

组装

组装时，将喷涂附加装置插入喷枪手柄，使两个箭头相互对着。按照箭头方向将喷枪手柄转动90°，直到听到附加装置啮合为止（图1）。

拆卸喷涂附加装置时，按下扳机下的搭扣（图1、A），将喷涂附加装置转动90°。



喷雾形状设置和正确喷涂技术详情，请参看基本单元的使用说明。

备件（图2）



禁止将其他附加装置的不同颜色零部件组合在一起。

位置	订单编号	名称
1	2330 167	成套FineSpray喷涂附加装置（棕色）
2	2321 868	喷雾射流宽度调节杆（成形空气调节）
3	2314 591	喷雾射流水平调节环（垂直/水平）
4	2317 820	空气帽
5	2314 585	空气滤网
6	2317 667	喷嘴（R1.8）
7	2323 934	喷嘴密封装置
8	2304 027	单向阀（通风软管、阀盖、隔膜）
9	0417 308	喷涂附加装置的O型环
10	2326 126	R 1.8喷枪主体（包括位置7-9）
11	2319 223	容器密封装置
12	2319 222	进料管
13	2324 248	细进料管过滤器（红色，5件）
14	2322 451	1000 ml的带盖容器
	2315 539	润滑脂

环境保护



应以环保方式对装置和附件进行回收利用。禁止随家庭垃圾一起处理该装置。为了环保，应将装置拿到当地收集点或向专门零售商处了解信息。

产品责任方面的重要注意事项！

使用其他附件和备件可能无法获得部分或全部产品责任和保修索赔。WAGNER原厂附件和备件保证达到所有安全法规要求。

Wagner Spraytech(shanghai) Co., Ltd.

Division Professional Finishing

No.1280, Wanrong Road

200436, Shanghai, China

Before using the attachment, read these operating instructions and familiarise yourself with the operating instructions for the basic unit. The safety instructions for the basic unit apply to this FineSpray spray attachment.

The **FineSpray spray attachment** has been especially developed for the application of low-viscosity materials. The FineSpray spray attachment can be used with all devices with the CLICK&PAINT SYSTEM.

Coating materials suitable for use

Mordants, glazes, impregnations, oils and other low-viscosity materials

Coating materials not suitable for use

Viscous materials

Interior wall paint (dispersions and latex paint)

Materials that contain highly abrasive components, facade paint, caustic solutions and acidic coating substances.

Materials with a flash point below 21°C.

Preparing the coating material



Observe the manufacturer's instructions for the use of the coating material on the paint tin or on the technical instruction sheet.

An absolute precondition for the trouble-free operation of the fine-spray system is that the coating material is uncontaminated. If you have doubts as to the purity of the coating material, we recommend that you first filter it through a fine sieve.

COATING MATERIAL	PROCESSING	COMMENTS
Solvent-based lacquer paints	observe manufacturer's instructions	
Water-soluble lacquer paints	observe manufacturer's instructions	
Mordants, glazes, impregnations, oils	undiluted	Use red feed tube filter
Clear varnishes, synthetic enamels, coloured paints, alkyd resin varnishes	observe manufacturer's instructions	
Primers, radiator paints, hammer effect enamels	observe manufacturer's instructions	

COATING MATERIAL	PROCESSING	COMMENTS
Anti-rust paints, special-effect paints	observe manufacturer's instructions	
Multicolor paints, textured paints	observe manufacturer's instructions	

Assembly

For assembly, insert the spray attachment into the gun handle so that the two arrows point at each other. Turn the gun handle 90° in the arrow direction until it audibly engages. (Fig. 1)

To remove the spray attachment, push the catch (Fig. 1, A) beneath the trigger down and turn the spray attachment by 90°.



For further information on setting the spray pattern and the correct spraying technique refer to the instructions of the basic device.

Spare Parts (Fig. 2)



You cannot combine different-coloured parts of other attachments.

POS.	ORDER NO.	DESIGNATION
1	2330 167	FineSpray spray attachment (brown) complete
2	2321 868	Spray jet width adjusting lever (shaping air)
3	2314 591	Spray jet level adjusting ring (vertical/horizontal)
4	2317 820	Air cap
5	2314 585	Air screen
6	2317 667	Nozzle (R 1.8)
7	2323 934	Nozzle seal
8	2304 027	Non-return valve (Ventilating hose, valve cover, diaphragm)
9	0417 308	O-ring of spray attachment
10	2326 126	Body of gun R 1.8 (including position 7-9)
11	2319 223	Container seal
12	2319 222	Feed tube
13	2324 248	Fine feed tube filter (red, 5 pc.)

POS.	ORDER NO.	DESIGNATION
14	2322 451	Container with cover 1000 ml
	2315 539	Lubricating grease

Environmental protection



The appliance and accessories should be recycled in an environmentally friendly way. Do not dispose of the appliance with household waste. Support environmental protection by taking the appliance to a local collection point or obtain information from a specialist retailer.

Important Note regarding Product Liability!

Using other accessories and spare parts can lead to partial or total loss of liability and guarantee claims. With original WAGNER accessories and spare parts, you have the guarantee that all safety regulations are fulfilled.

Wagner Spraytech(shanghai) Co., Ltd.

Division Professional Finishing

No.1280, Wanrong Road

200436, Shanghai, China