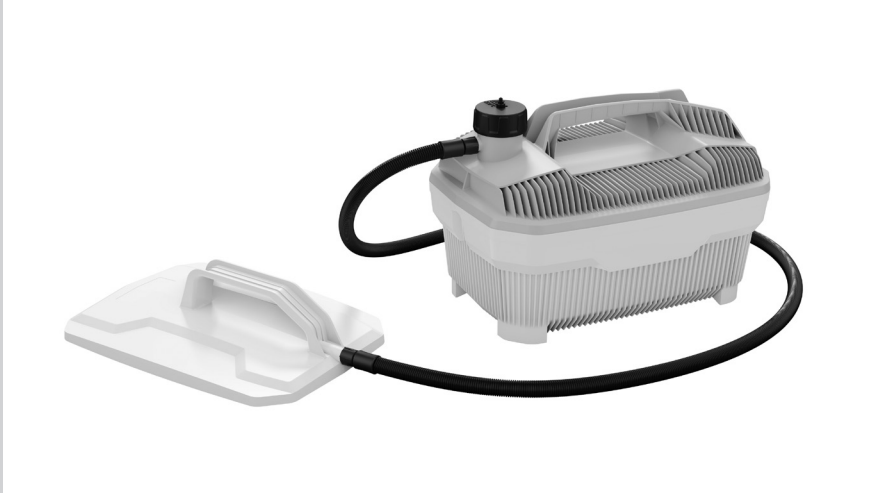
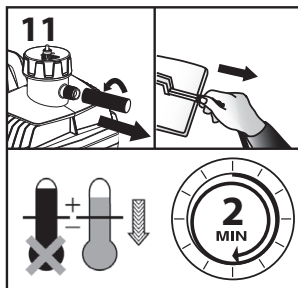
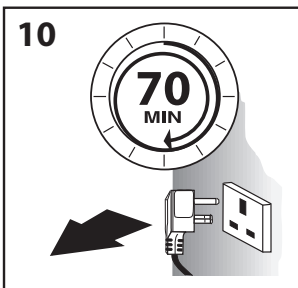
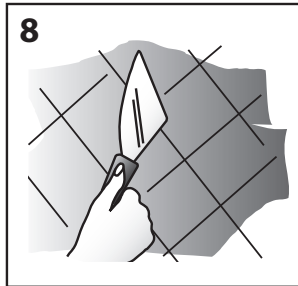
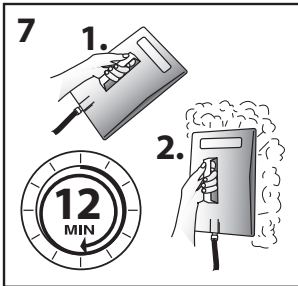
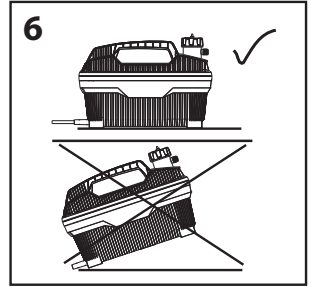
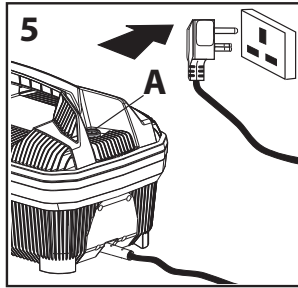
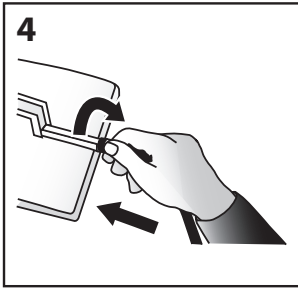
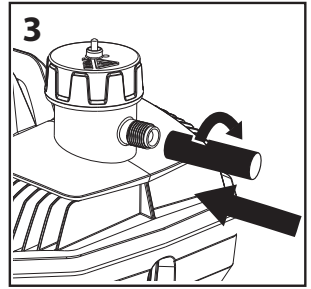
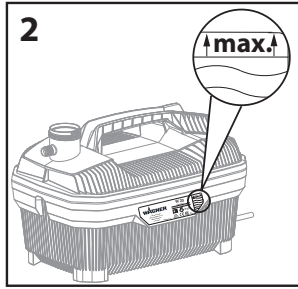
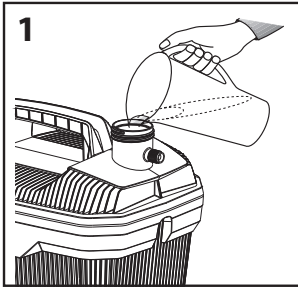


WAGNER



**STEAM WALLPAPER STRIPPER
STEAMFORCE
STEAMFORCE PLUS
OWNER'S MANUAL**

GB

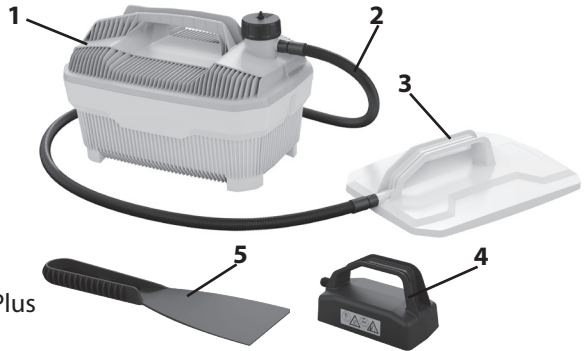


MANY THANKS FOR PLACING YOUR TRUST IN US

The operating instructions are part of the unit. Keep them in a safe place! Read these operating instructions carefully and in full before using the unit.

Scope of delivery

- 1 Base unit
- 2 Steam hose
- 3 Steamplate large
- 4 Steamplate small*
- 5 Scraper*
- 6 Operating manual



* Only included with SteamForce Plus

Explanation of symbols used

	<p>This symbol indicates a potential danger to you or for the tool. Under this symbol you can find important information on how to avoid injuries and damage to the power tool.</p>
	<p>Indicates tips for use and other particularly useful information.</p>
	<p>Caution: Steam may escape from edges of steamplate</p>
	<p>Risk of scalding: When working overhead, beware of hot dripping water</p>
	<p>Caution - risk of burns: surface can get hot during use.</p>
	<p>Wear suitable safety gloves when working.</p>
	<p>Wear suitable safety goggles while working.</p>

General Safety Instructions

CAUTION! *Read all the instructions. Non-observance of the instructions below can cause electric shock, fire and/or serious personal injuries.*



- a) **Keep your workplace clean and well lit.** *Disorderly or unlit workplaces may result in accidents.*
- b) **Keep children, unauthorised persons and animals out of reach of the steamer.** *You can lose control of the appliance if you are distracted.*
- c) **The steamer plug must fit into the socket-outlet. The plug may not be modified in any form. Do not use adaptor plugs together with protective-earthed tools.** *Unmodified plugs and suitable sockets reduce the risk of an electric shock.*
- d) **Avoid physical contact with earthed surfaces such as pipes, heating elements, stoves and refrigerators.** *The risk through electric shock increases if your body is earthed.*
- e) **This device can be used by persons with impaired physical, sensory or mental capacities or a lack of experience and knowledge if they are supervised or have been instructed in the safe use of the device and understand the dangers arising from it.**
- f) **Children shall not play with the appliance.** *Risk of scalding or shock.*

Safety Instructions for Steam Wallpaper Strippers

ATTENTION! When working with hot steam (min.100°C), there is a risk of serious scalding. Hot steam and boiling water can emit when the safety valve is activated due to overpressure in incorrect operation of the unit.



Only change position during use, with care. The steam unit, hose and steamplate can be very hot. Always wear suitable protective clothing / gloves.

Operate the unit only with pure water without agents or additives.

DO NOT switch the unit on when empty.

NEVER point the steamplate / bar at people, animals or at objects sensitive to temperature. Do not point liquid or steam directly at electrical devices or equipment containing electrical components. **Always ensure that the unit**

is standing securely in a horizontal position (on the floor) (Fig. 6).

DO NOT stand on or place objects onto the unit or steam hose.

NEVER over-twist or make kinks in the steam hose, and never block the valve. Only carry the unit by its handle.

NEVER pull on the steam hose or supply cord. The device must not be used if it has been dropped, if obvious damage is visible or if it is leaking.

NEVER submerge the unit in liquid. Whenever accessories are replaced, during maintenance, when filling / refilling or draining, and whenever the steam device is not in use (including breaks between work), the plug on the mains cable must be removed from the socket. The device must be kept out of the reach of children whenever it is switched on or cooling down.

NEVER overfill the unit. Unplug the mains plug in the event of overfilling or a fault. Use only WAGNER **original spare parts and accessories!**

CAUTION! Danger of short-circuits! Cover socket-outlets and switches and do not subject them to steam. When using an extension cable: max. 10m long – the cord cross-section must be at least 3 x 1 mm². **Avoid damage!** When working in the vicinity of wood / gypsum bases and coated materials these can be impaired by heat or steam. Remedy: Use a heat / steam shield made of cardboard or metal. The unit switches off automatically in case of overheating. After approx. 10 minutes, the unit switches itself back on automatically. The steam time is approximately 70 minutes. The device must never be left unsupervised while it is plugged into the mains power supply.

NEVER leave a unit unattended if switch is on. Keep the unit away from children and animals.

NEVER let the container steam until it is completely empty.

Intended use

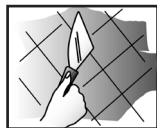
The Steam Wallpaper Stripper is solely suited to removing wallpaper.

To ensure long life of the steam wallpaper stripper, unplug and clean your unit immediately and thoroughly after each use.

CAUTION! - Steam can loosen weak, cracked, porous or poorly bonded plaster. Check a small area before starting work. Do not hold the steamplate in one position too long and stop if plaster starts to break.

PROTECT YOUR HOME- To prevent marks from steam on carpets and soft furnishings it is recommended the unit be placed on a hard flat board. Ensure the unit will not slip or tilt. Dust sheets and newspapers are not suitable.

Preparation



For multi-layered, painted-over or water-resistant wallpapers especially, we recommend working on the areas to be stripped using a wallpaper scorer in a grid pattern.

Operation

- Remove filler cap and fill unit with clean water to the MAX level line indicator. Replace cap (Fig. 1+2).
- Screw hose onto threaded outlets of boiler and steemplate, securely by hand. **DO NOT overtighten** (Fig. 3+4). Check regularly during use to ensure secure fit.
- Connect supply cord from unit to power socket-outlet (Fig. 5).
- It can take up to 12 mins (approx.) before steam is produced - depending on fill water quantity and temperature (Fig. 7).
- **DO NOT** leave unattended and keep children and pets out of the room.
- Just before full steam production a small amount of bubbling and water will occur at the steemplate.
- **BEWARE** of hot water discharge prior to steam emission.
- Hold the steemplate flat against the wallpaper for approx. 10 seconds - from which the paper should now easily come away using a wallpaper scraper (Fig. 9).
- Some papers may need more steam than others. Operate steamer until water level is low, then unplug unit and allow to cool for at least 2 minutes (Fig. 11).

CAUTION! WARNING: Hot liquid or steam can burn.



Danger of scalding. Steam may also condense into boiling droplets. Steam should not be directed towards electrical appliances. Danger of scalding appears on the cap as either symbol.



Beware! Hot steam can escape when opening the tank cover and topping up the unit. Once the work is finished, allow the unit to cool down completely and empty it. Only put the unit in storage if it is empty and dry.

CAUTION! Before loosening the filler cap always allow the unit to cool down for at least 2 minutes. Risk of scalding!



Heated water can leak from the steemplate during the heating-up phase. Hot water can drip during overhead work.

Descaling



Lime scale build up will damage your unit. Regular descaling is essential in keeping your unit operational. Descale the unit depending on the hardness of the water used in accordance with the information in the table below. Units which are defective due to a lack of descaling are excluded from the guarantee!

Hardness	°e	mmol/l	Recommended descaling
Low	< 10,53	< 1,50	After 11 tank fills (44 litres)
Medium	10,53 - 17,54	1,50 - 2,50	After 9 tank fills (36 litres)
High	> 17,54	> 2,50	After 6 tank fills (24 litres)

- Using standard descaling liquid or tablets, fill a jug with 1.5 litres of water
- Add correct amount of descaler following manufacturer's guidelines and mix thoroughly.
- Pour the descaling solution into unit.
- Leave the descaling solution to work for 30 minutes.
- Then fully empty the steam wallpaper stripper.
- Thoroughly rinse the unit two to three times with clear water to remove all descaling solution residue.

Storage

Store emptied, upright and dry.

Technical Data

Power source:	220-240 V ~	Power consumption:	2000 W
Steaming time:*	70 min.	Steam rate:	45 g/ min
Max. filling volume:	4.0 L	Large steampate weight:	150 g
Unit weight (device, steam hose, large steam plate) :	1.8 kg	Small steampate weight:	60 g
Hose length:	3.7 m		

* Approximate steam time before the safety cut-out operates.

Correction of Malfunctions

Malfunction	Cause	Remedy
The steam wallpaper stripper is not working	<ul style="list-style-type: none"> • Heating element covered in limescale • Too little water in tank. A safety cut out is fitted to prevent overheating of element if there is little water in tank • Unit at an angle, heating element is not in water 	<ul style="list-style-type: none"> • Clean • Fill with more water. Wait 2 minutes. Refill will reset the cut-out element • Move unit into horizontal position

Spare Parts

Pos.	Name	Order No.
1	Steam hose	2414575
2	Steamplate large	2414572
3	Steamplate small	2414573
4	Scraper	2414574
5	Filler cap	2414576

Environmental protection



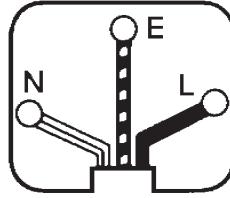
The appliance and all accessories and packaging have to be recycled in an environmentally friendly manner. Do not dispose of the appliance with household waste. Support environmental protection by taking the appliance to a local collection point or obtain information from a specialist retailer. Please pay special attention to the instructions on the product packaging.



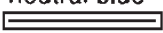
Important Note regarding Product Liability!

In accordance with an EC directive, the manufacturer is liable for this product only if all parts originate from or were approved by the manufacturer and the tools are assembled and operated correctly. The use of other accessories and spare parts can partially or completely invalidate the liability.

WARNING (UK ONLY)

Your unit has been supplied with a supply cord and a fitted plug. This is identified by the fuse holder in the base of the plug. Please read the following safety instructions before use.



earth
green & yellow
E 
live brown
L 
neutral blue
N 

1. If the fitted plug is cut off from the supply cord then the plug must be disposed of safely.
2. **NEVER** under any circumstances insert such a plug into a 13 Amp socket-outlet.
3. **NEVER** under any circumstances use the appliance or supply cord without the fuse cover fitted. This is the little cover fixed into the base of plug to hold the fuse in place.
4. If you lose the fuse cover then please contact any electrical dealer for a replacement or ring our helpline above.
5. A replacement fuse must be rated at 13 Amps and approved to BS1362.

IF IN ANY DOUBT PLEASE CONSULT A QUALIFIED ELECTRICIAN.

If you need to fit a plug to the supply cord, this should be fitted in accordance with the wiring instructions below, and will need to be used with a 13 Amp fuse. If in doubt consult a qualified electrician.

WARNING - THIS APPLIANCE MUST BE EARTHED. If you are using an extension lead it must be rated a minimum of 10 Amps and fully unwound. Do not operate with a cord rated less than 10 Amps as this will cause premature failure of the element which is not covered by the guarantee. As the colours of the wires in the supply cord of this appliance may not correspond with the coloured markings identifying the terminals in your plug, proceed as follows:

The wire which is coloured green and yellow must be connected to the terminal in the plug which is marked with the letter E or by the earth symbol, or coloured green.

The wire which is coloured blue must be connected to the terminal which is marked with the letter N or coloured black.

The wire which is coloured brown must be connected to the terminal which is marked with the letter L or coloured red.

3 + 1 year guarantee on this WAGNER DIY product

In addition to the statutory warranty for this product, J. Wagner GmbH, based in 88677 Markdorf, Germany, grants you a guarantee (device guarantee) of 36 months for this product. This guarantee is extended by a further 12 months if the product is registered within 28 days of purchase on the Internet at <https://go.wagner-group.com/3plus1>.

The guarantee includes the free repair of defects which are demonstrably caused by the use of unsuitable materials in the product's manufacture or by assembly

errors, as well as the free replacement of faulty components provided there are no guarantee exclusions.

The statutory material defect rights to which you as the purchaser are entitled for the intended purpose from the time of handover of the purchased item are not restricted by the guarantee. The guarantee, along with your statutory warranty rights, will expire if the device has been opened by persons other than authorised WAGNER service personnel. The detailed guarantee conditions can be obtained on request from our authorised WAGNER partners (see website or operating instructions) or in text form on our website:

<https://go.wagner-group.com/hf-warranty-conditions>



- Modifications reserved -

EU Declaration of conformity

We declare under sole responsibility that this product conforms to the following relevant stipulations:

2014/35/EU, 2014/30/EU, 2011/65/EU, 2012/19/EU

Applied harmonised norms:

EN 60335-1, EN 60335-2-54, EN 55014-1, EN 55014-2, EN IEC 61000-3-2, EN 61000-3-3, EN 62233

The EU declaration of conformity is enclosed with the product.

If required, it can be re-ordered using order number **2410392**.

UKCA Declaration of conformity

We declare under sole responsibility that this product conforms to the following relevant regulations:

Electrical Equipment (Safety) Regulations 2016

Electromagnetic Compatibility Regulations 2016

The Restriction of the Use of Certain Hazardous Substances in Electrical and Electronic Equipment Regulations 2012

Applied harmonised standards

BS EN 60335-1:2012+A15:2021, BS EN 60335-2-54:2008+A1:2015,

BS EN IEC 55014-1:2021, BS EN IEC 55014-2:2021, BS EN IEC 61000-3-2:2019+A1:2021,

BS EN 61000-3-3:2013+A2:2021, BS EN 62233:2008

D Inspiration der besonderen Art

Sie sind auf der Suche nach Ihrem nächsten Projekt? Dann schauen Sie bei unserem Projektfinder vorbei. Hier finden Sie praktische Anleitungen rund um die Themen Renovieren, Verschönern und Selbermachen. Also machen Sie sich schön!

GB Inspiration of a very special kind

Are you on the look-out for your next project? Then take a look at our project finder. Here, you'll find practical guides on renovation, decoration and DIY. Make your home unique. Make it beautiful!



D Zeit für einen Tapetenwechsel!

GB Time for a change of wallpaper!



D Lackieren Sie ihre Terrasse neu!

GB Paint, renovate and protect decking!



D Gestalten Sie Innen- & Außenbereiche in tollen Farben!

GB Use fantastic colours indoors and out!



D Mehr Inspiration?
wagner-group.com/projects

GB More inspiration?
wagner-group.com/projects



D
J. WAGNER GMBH
Otto-Lilienthal-Str. 18
88677 Markdorf
T +49 0180 - 55 92 46 37
F +49 075 44 -5 05 11 69

SK
E-CORECO SK S.R.O.
Kráľovská ulica 8/7133
927 01 Šaľa
T +42 1948882850
F +42 1313700077

CZ
E-CORECO S.R.O.
Na Roudné 102
301 00 Plzeň
T +42 734 792 823
F +42 227 077 364

F
WAGNER FRANCE S.A.R.L.
12 Avenue des Tropiques
Z.A. de Courtaboeuf
91978 Les Ulis Cedex
T +33 0825 011 111
F +33 (0) 1 69 81 72 57

GB
**UK IMPORTER
WAGNER SPRAYTECH (UK) LTD**
Innovation Centre
Silverstone Park, Silverstone
Northants NN12 8GX
T + 44 (0) 1327 368410

DK
DVA A/S
Marielundvej 48 C
2730 Herlev
T +45 70 234 239

DK
ORKLA HOUSE CARE DANMARK A/S
Stationsvej 13
3550 Slangerup
Danmark
T +45 47 33 74 00
F +45 47 33 74 01

NOR
ORKLA HOUSE CARE NORGE AS
Nedre Skøyen vei 26,
PO Box 423, Skøyen
0213 Oslo
T +47 22 54 40 19

PL
PUT WAGNER SERVICE
ul. E. Imieli 27
41-605 Swietochlowice
T +48/32/346 37 00
F +48/32/346 37 13

S
ORKLA HOUSE CARE AB
Box 133
564 23 Bankeryd
Sweden
T +46(0)36 37 63 00

ROM
ROMIB S.R.L.
str. Poligonului nr. 5 - 7
100070 Ploiesti, judet Prahova
T +40-344801240
F +40-344801239

CH
J. WAGNER AG
Industriestraße 22
9450 Altstätten
T +41 71 - 7 57 22 11
F +41 71 - 7 57 23 23

E
P
**MAKIMPORT
HERRAMIENTAS, S.L.**
C/ Méjico nº 6
Pol. El Descubrimiento
28806 Alcalá de Henares (Madrid)
T +34 902 199 021 /
+34 91 879 72 00
F +34 91 883 19 59

AUS
**WAGNER SPRAYTECH
AUSTRALIA PTY. LTD.,**
8 – 10 Dansu Court
Hallam, Victoria, 3803
T +61 3 9587 2000
F +61 3 9580 9120

I
FHC SRL
Via Stazione 94,
26013 Crema (CR)
T 0373 204839
F 0373 204845