

FINISH

SPRING / SUMMER 2022

The magazine for inspiration, decoration and do-it-yourself

CREATIVE
IDEAS FOR
DOING IT
YOURSELF

EVA BRENNER
INSPIRED

DIY light sculptures

WALL DESIGN

Stylish panels

OUTDOORS

Ethnic-look beer table

GARDEN FURNITURE

Making a beach chair
from pallets



Visit our website for hints, instructions and advice for applying the perfect coat of paint:
finish.wagner-group.com/project-ideas



Questions, Comments & Suggestions:

✉ J. Wagner GmbH
 Selbermacher
 Otto-Lilienthal-Strasse 18
 88677 Markdorf
 Please provide your postal address and telephone number.

Legal notice:

Finish – The magazine for inspiration, enhancements and DIY.

Issue: Spring / Summer 2022

Publisher: J. Wagner GmbH, Markdorf, www.wagner-group.com

Editorial team: Dunja Bestfleisch, Andrea Fetscher, Anja Temme, Julia Tockweiler

Design: Hinterland, www.das-hinterland.de



04



14



18

Light sculptures for the garden

04

Eva Brenner shows how you can design practical decorative elements yourself

Creative wall design

14

How to conjure up a real eye-catcher for your bedroom with the natural material of wood

Ethnic-look beer table with Eva Brenner

18

A simple beer table set becomes a fine garden table in no time at all

Making a beach chair from pallets

26

Create a beach feeling in the garden with this creative DIY idea

Interview with Eva Brenner

34

The interior designer and presenter talks about her new book and her own renovation projects

DIY garden table

36

How to build your own table for your outdoor area



36



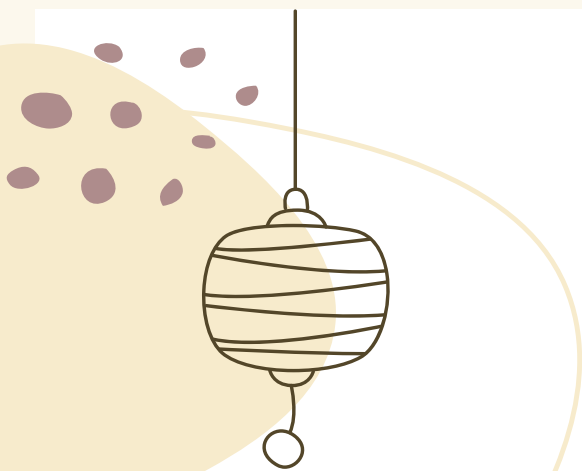
26



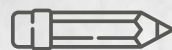
34

Light-up side table and stool for outdoor use: DIY instructions for do-it-yourself





Building a side table for the garden or terrace yourself as a DIY-er is quite simple. The result is even more beautiful when LED lights are added, because light and wood complement each other perfectly. The indirect lighting adds elegance. Our light sculptures made of wooden beams and LED lamps are at the same time stools to put your feet up on and side tables for the outdoor area. With a WAGNER spray unit, the wood quickly shines in the shade of your choice – matching the colour of the LED lights, which you can also choose to suit your tastes! And because this DIY project is so easy to do, it also makes a great gift. In our building instructions, together with Eva Brenner, we show you step by step how to build your own side table or outdoor seating stool with your own design from wooden beams and lights.



LIST OF MATERIALS

Tools

Cordless screwdriver

Rubber mallet

Spray system from Wagner,
e.g. the W 590 FLEXiO

Crown drill

Tools

Masking tape

Pencil

Folding ruler

Adhesive

Fabric tape (Gaffa tape)

Material

Wooden beams

Square wooden board

LED lights

Plugs

Paint for primer

Coloured paint in your desired colour

Square wooden plate
for the LED light

4 screws

Step 1

Priming the wooden beams

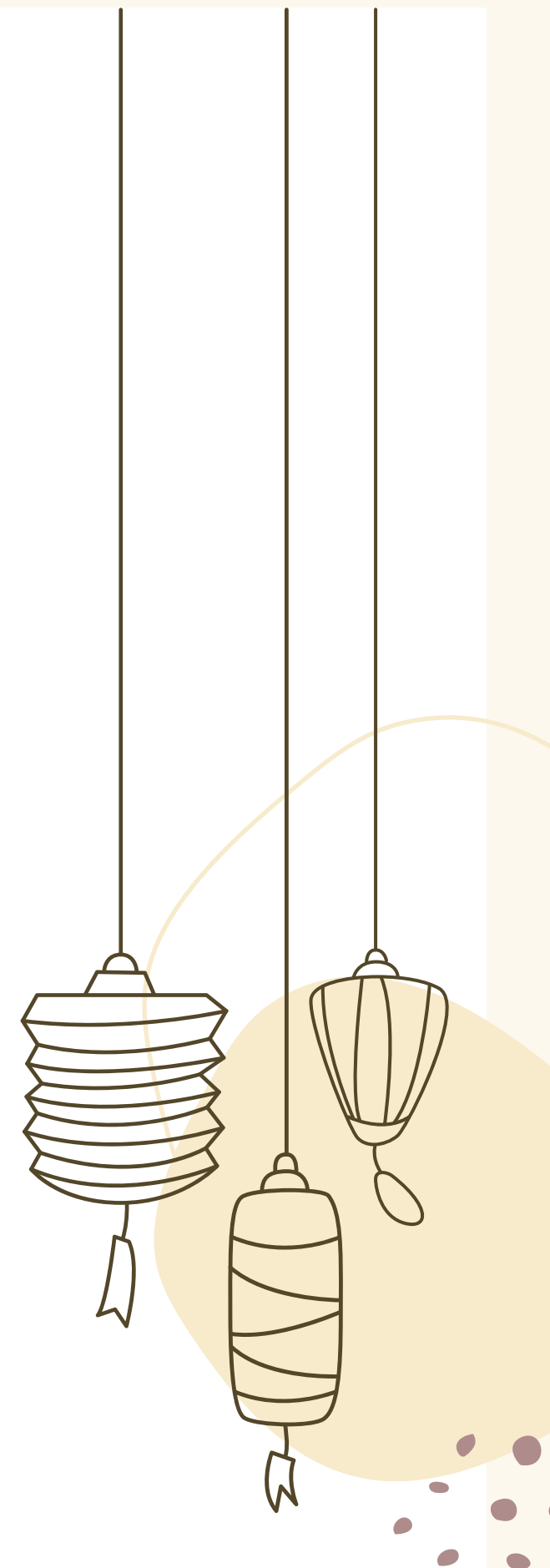
You can have the wooden beams cut to size at the DIY store beforehand. The length then determines the height of the stools. Now it's straight on to spraying on the primer with the W 590 FLEXiO. Use the paint attachment for spraying. The correct settings are important – the "Air Power" should be set to maximum for working with paint. Then allow the primer to dry. When painting with the W 590 FLEXiO, always ensure an even distance to the wooden beam and uniform spraying movements.



Step 2

Painting the wooden beams

Mask off the substrate well before spraying with paint if it is not going to be sprayed. With the paint spray system, only one spraying process is needed. The air volume can be adjusted with the FLEXiO: Set it to at least level 6 when working with viscous materials.



**Step 3**

Drilling holes for the plugs

Draw the marks for the holes with a soft pencil. Make sure that the distances between the holes and the edge are the same for both wooden beams. Use masking tape on the drill as a marker so that you do not drill too deep into the wooden beam.

Step 4

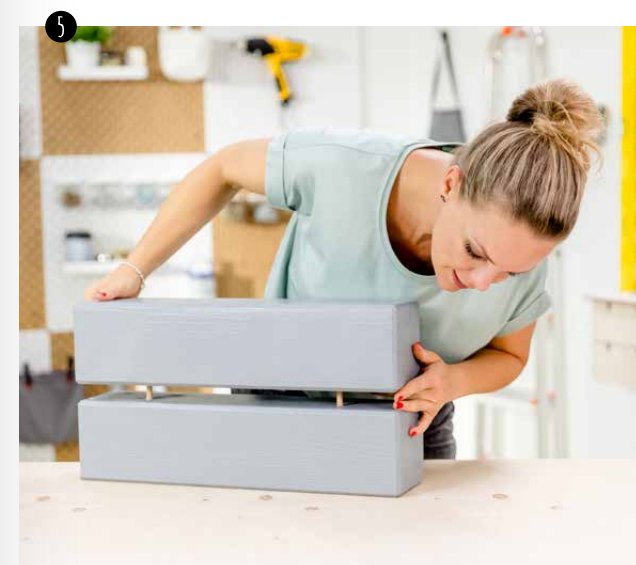
Applying glue and inserting the plugs

Fill the drilled holes with glue. Then fix the plugs in place with the rubber mallet and make sure to hit them straight. You can also carefully straighten the plugs with the hammer if they become a little skewed due to the hammering.

Step 5

Putting the beams together

The plugs and the holes now fit perfectly into each other. Line them up and join them with hammer blows. Make sure that the gap between the wooden beams remains the same size at every point.

**Step 6**

Putting pairs of beams together

Now join the two pairs of beams together to form a stool. To do this, drill holes for plugs again, but make sure that the new holes are slightly offset from the existing plugs. Otherwise, proceed in the same way as in steps 3 – 5.

**Step 7**

Positioning the LED light

Using the crown drill, drill a recess for the LED light in a square plate that is slightly smaller than the circumference of your stool. Now push the light through the recess and fix it to the underside of the plate with the fabric tape. Attach the board to the bottom of the wooden sculpture with the cordless screwdriver and the four screws.

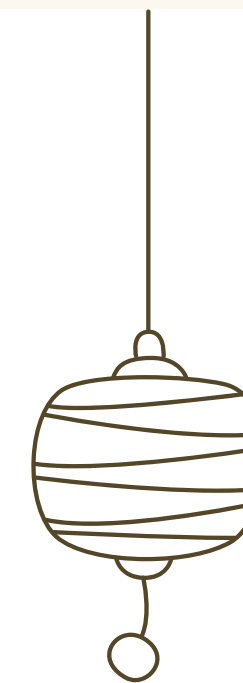


DIY outdoor stool and side table in one: tips and tricks for design

Which paint, which type of wood and which spray attachment are suitable for DIY outdoor furniture?

If you want to place the DIY side table or garden stool outdoors, a waterproof paint is recommended. The Wood&Metal Extra Standard spray attachment is suitable for spraying the wood sculpture using the FLEXiO W 590. It is specially designed for the application of paints, varnishes, wood preservatives, primers and oils on small and medium-sized objects such as your LED wood sculpture.

Rustic furniture made of solid wood with good workmanship is weatherproof and beautiful to look at. And which type of wood is best for garden furniture? Teak and pine have proven to be classics for this. However, larch or Douglas fir are also suitable for outdoor use.



A wide range of design options: LED sculpture as a decoration, side table and outdoor stool made of wood

Of course, you can also vary the design of the light sculpture. The design for the side table or stool can be more minimalist or jazzed up with additional details. Build several of the small pieces of furniture at different heights. Or you can place a few tables of the same height next to each other. In this way, you create a kind of sideboard that you can complement with another decorative element such as a lantern or a potted plant. To make the stool easy to move, mount castors on the underside.

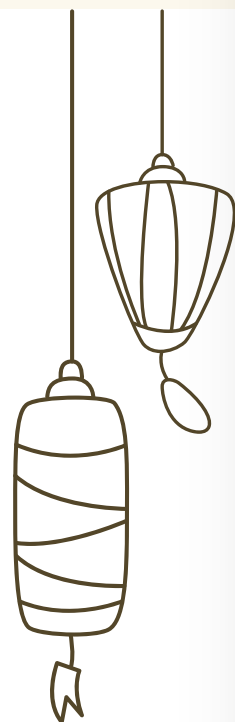
Place a cosy fur cushion on the seat to make the seat cube even more comfortable. Of course, the wooden construction can also serve as a side table – for example as a complement to this cosy beach chair (see page 26). Let your creativity run free. You also have a free choice of colour design. LED lights come in numerous shades. This way you can perfectly match the sculpture to your garden décor.

No matter which colours you use, whether you use the sculpture as a seat or as a storage surface: your DIY wooden construction is a bright eye-catcher in every case.

You can find these and other exciting DIY ideas for your outdoor oasis of calm in Eva Brenner's book: "My best DIY projects for gardens and balconies" (in German). From upcycling the discarded washing drum, which becomes a decorative table, to sewing instructions for a cosy bean bag for relaxing, the well-known graduate interior architect shows with numerous do-it-yourself projects how to bring a special ambience to your outdoor area. (published by Verlag Becker-Joest-Volk).

Interested?

You can order Eva's book here
(in German): <https://bjvv.de/Buch/9783954531561-Meine-besten-DIY-Projekte-fuer-Garten-und-Balkon>



BEDROOM WALL DESIGN WITH PANELS AND COLOUR

With wooden panels and the right wall paint, Aneta creates cosiness through a creative wall design in her bedroom. And best of all: the wooden panels are also very easy to build yourself. Here are the instructions from Aneta: Modern wall design with wood.



The Universal Sprayer W 690 FLEXiO paint spray device from Wagner makes spraying the wall and painting the wooden slats for self-built panels a DIY project requiring very little work. LED lights behind the bed give the room and its furnishings a cosy atmosphere thanks to indirect lighting.

Wooden panels as decoration for the wall

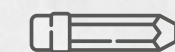
Would you like to design the wall behind the bed in the bedroom yourself? Wooden panels are a great wall decoration in the trendy Scandi interior design. They are particularly practical if there is not much room for decoration in the bedroom, as they offer additional storage space. This accent wall will turn your bedroom area into a real eye-catcher. If you opt for acoustic panels instead of conventional wooden panels, you will not only have a decorative eye-catcher for your bedroom wall design, but also pleasant room acoustics. With their acoustic foam base, they reduce reverberation in rooms as well as high and medium frequencies.

A step-by-step guide: Bedroom wall design with Scandi-style panels

Step 1

Masking

Tape the edges of the wall well before you start spraying. Use a dust sheet and adhesive tape for this purpose.



LIST OF MATERIALS

Tools

Paint spraying system,
e.g. Universal Sprayer W 690

We recommend: Handle extension
Universal Extra Extension

Cordless screwdriver

Tools

Respiratory mask

Dust sheet

Adhesive tape

Material

Wooden slats

Oak board as shelf

DIY wall paint

LED strip light

Sufficient screws and brackets
for fastening

Step 2

Pour the paint into the paint container of the Universal Sprayer W 690 FLEXiO

Dilute the paint with water and stir vigorously until everything is well mixed. Pour the paint into the paint spray device's paint container.

**Step 3**

Perform a test

Spray with the paint spray system onto a piece of cardboard and then check that the mixing ratio of the thinner is suitable and that the paint has spread well.

Step 4

Spray on the wall paint

It's time to start spraying! Even, vertical movements give you the best result. The handle extension means you can also reach the upper edges.

**Step 5**

Screw wooden beams to the wall

Screw two brackets to each wooden beam. This creates a wooden construction of two beams each at the top and bottom. Now attach them to the bedroom wall using the brackets and screws.

**Step 6**

Attach wooden panels

Screw the panels to the wooden beams, at the top and bottom respectively. You can match the colour of the screws with that of the panels.

**Step 7**

Glue the LED strips to the beams

With the LED strips, you provide atmospheric indirect light and consequently even more cosiness. The LED lamps can be conveniently controlled via an app on your smartphone.

**Step 8**

Attach the board for decoration

The upper end of the construction is formed by an oak board, which is placed or screwed on above the LEDs. You can place decorations such as a vase or a picture on this additional shelf to add further accents – let your ideas run wild.

For questions about equipment or the instructions, feel free to write to us on our social media channels: Wagner Heimwerk on Instagram, Facebook or Pinterest.



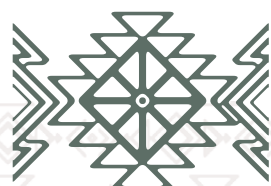
W 690 Flexio Universal Sprayer from Wagner: the practical helper for DIY projects

With its optional extension arm, the W690 FlexiO Universal Sprayer from Wagner is a practical helper for designing a bedroom wall with paint. The spray unit is ideal for spontaneous creative minds like Aneta, who want to do their own projects at home. The W690 is not only suitable for wall surfaces, but also for individual parts, as in DIY panel building. Here, the slats can be sprayed with paint individually – this is the quickest way.

DIY



WITH EVA BRENNER ON BEER BENCH DESIGN IN THE ETHNO LOOK



LIST OF MATERIALS

Tools

WAGNER paint spraying system:
e.g. W 590 FLEXiO with standard
spraying attachment

Sanding tool for sanding off paint residues
or roughening the wooden panel

Cordless drill and 10 mm
drill bit for wood

A long sturdy ruler

1 marker pen

Sharp cutting knife

Material

1 beer table set

Wood paint in the desired colour
(possibly additional clear varnish
for sealing)

Adhesive film for the pattern

High-quality adhesive tape

Sisal rope for the trivets
(approx. 15 – 20 m)

If desired:
metal paint for the table frame
Optional: Decoration for the table

We all know them from folk festivals, usually they cheer us up with the colourful orange of the 1970s – we're talking of course about the beer tent set. We love it because the beer bench reminds us of long evenings in convivial company, but it is not exactly a feast for the eyes. Sorry, beer table set! Or maybe it is? Eva Brenner, the well-known graduate interior designer, shows step by step how a paint spray system can be used to turn an ordinary wooden beer tent set into a modern, unique beer bench design piece with a trendy ethnic look. Not only will you impress guys at the next garden party, but you're also guaranteed to score points with the girls.





Painting the beer table set: This is how it's done, step by step

Before you can spray your wooden beer bench with new paint, you should think about the pattern you want to create. The best way to do this is to draw a true-to-scale table top on a sheet of paper and let your creativity run wild. Eva chose a stylish ethnic pattern in white for our table to give the beer tent set a sophisticated and airy look. As a special highlight, she adds trivets made of jute rope at the end to further emphasise the natural look of her design.



ETHNO LOOK



Step 1

Sanding the beer table set

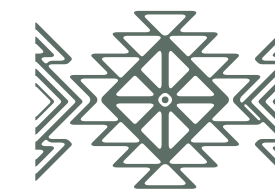
To remove the old orange paint from the beer bench, we recommend an electric random orbital sander. Make sure to sand with even movements and thoroughly remove the old paint from all areas to achieve a beautiful result later.



Step 2

Repainting the beer bench frame

You don't like the green legs of the metal beer table set either? Then you can set new accents here with a metal paint in your desired colour. It is best to use your paint spray system with the standard spray attachment supplied for this (recognisable by the fence symbol).



Step 3

Transferring the pattern onto the film

Have you come up with a nice pattern for your beer table? Then it's time to transfer it to the adhesive film. Use film that adheres well but is easy to remove and draw your pattern on the film, preferably with a marker pen and ruler.

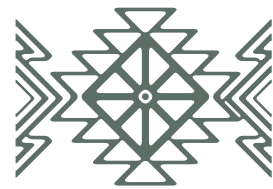


Step 4

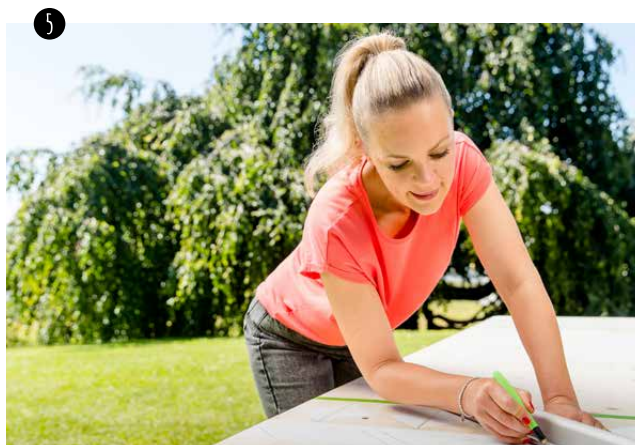
Sticking the film onto the beer table

Now stick the film strips onto the beer table. Make sure that no bubbles form while you are sticking the film on, otherwise the pattern may slip. It is best to use a squeegee to smooth the film out perfectly.



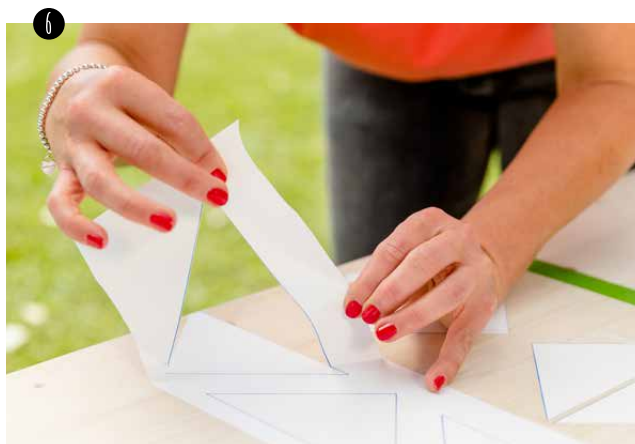
**Step 5**Cutting out the pattern
from the film

Now take the sharp cutting knife and the ruler to carefully cut out the film. Make sure to work as precisely as possible to get a beautiful result later.

**Step 6**

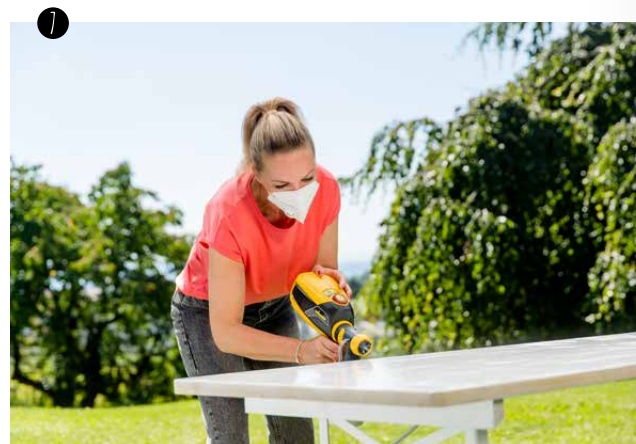
Pulling off film remnants

Now carefully peel off the remaining film so that only the desired pattern is stuck on the beer table. Quick reminder: the stuck-on areas remain unpainted at the end.

**Step 7**

Painting the beer table set

Now your paint spraying system comes into play! Adjust the sprayer to the paint you are using and start to paint the table top in even stripes at a distance of 10 – 20 cm. For the best coverage, work in a cross pattern, i.e. spray once vertically and once horizontally.

**Step 8**

Removing the film after painting

Once you have applied the layers of paint to your beer table, you should remove the film after a short drying time – the paint should still be damp. It is best to use your cutting knife again to loosen the corners.

**TIP**

Here we have compiled general tips & tricks for painting with a spray system for you.

[finish.wagner-group.com/
applying-glazes-and-lacquers](https://finish.wagner-group.com/applying-glazes-and-lacquers)



ETHNO
LOOK



Step 9

Preparation for the trivets

Now drill approx. 12 holes on the opposite sides of a square surface as close together as possible. Make sure that the sisal rope creates a square at the end. Use a drill bit that has a slightly larger diameter than the rope you are using.

Step 10

Threading the trivet

At the end, thread the sisal rope through the pre-drilled holes to create individual trivets on your beer tent set. Make sure to always tension the rope tightly to get an even result at the end. When you have finished, you can tie the rope tightly to the underside of the beer table.



Decorating a beer tent set

Eva Brenner has now shown us how to redesign an old beer bench and turn it into a real designer piece. All that's missing now for the perfect garden party are the matching accessories for the beer table decoration. Small ceramic vases with fresh eucalyptus and baby's breath not only look summery, but are also classy enough to decorate a chic beer bench for a wedding or a big birthday, for example. A pitcher with lemons and limes in the water refreshes the party guests and looks beautiful at the same time. Our white beer table design in ethnic look goes particularly well with pastel shades such as delicate rose and mint green. At the same time, these colours form a beautiful contrast to colourful, cheerful dishes. As you can see, there are no limits to your imagination when painting a beer table set. How have you designed your beer table? Why not show us on Instagram with a link to @wagner.heimwerk. We are already excited!

TIP

If you do the work and paint your beer tent set, it would be a shame if the beautiful piece weathers quickly outdoors. You can prevent this by applying a clear varnish to the beer table after your pattern. This affords it maximum protection from the wind and weather. Here you can find even more tips & tricks on how to weatherproof your garden furniture:

[finish.wagner-group.com/
wooden-garden-furniture](https://finish.wagner-group.com/wooden-garden-furniture)

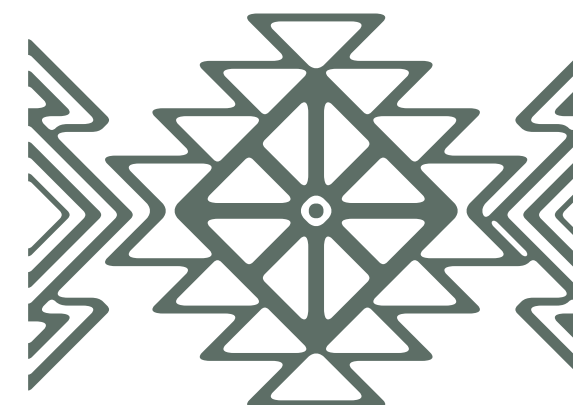


Even more inspiration for your garden:

You can find these and other exciting DIY ideas for your outdoor oasis of calm in Eva Brenner's book: "My best DIY projects for gardens and balconies" (in German). From upcycling the discarded washing drum, which becomes a decorative table, to sewing instructions for a cosy bean bag for relaxing, the well-known graduate interior designer shows with numerous do-it-yourself projects how to bring a special ambience to your outdoor area. (published by Verlag Becker-Joest-Volk)

Interested?

You can order Eva's book here: [https://bjvv.de/
Buch/9783954531561-Meine-besten-DIY-Projekte-fuer-
Garten-und-Balkon](https://bjvv.de/Buch/9783954531561-Meine-besten-DIY-Projekte-fuer-Garten-und-Balkon)

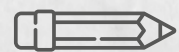


A man with a beard and short dark hair is sitting on a large, dark-colored pallet beach chair. He is wearing a black t-shirt with a graphic of a sunset and a fork, light blue shorts, and black sneakers. He is holding a yellow and black power drill in his right hand and a white spray bottle in his left hand. The chair is made of dark wood pallets and has two large brown cushions. It is positioned on a grey stone patio in front of a red brick wall. To the left of the chair is a window with green blinds. To the right is a small wooden table with a potted plant. The overall scene is outdoors and well-lit.

BUILDING A BEACH CHAIR FROM PALLETS

Instructions by Sari and Christian
from Saris Garage

Sari and Christian from Sari's Garage always have great ideas for furniture made from pallets: This time it's a do-it-yourself beach chair. It will make you feel almost like you're on the beach in your own garden! Whether you want a show stopper for your garden, furniture for your terrace, holiday feelings like at the Baltic Sea or the combination of sun protection and a cosy seating to read a book, these instructions will serve you very well for creating a very special piece of pallet furniture!



LIST OF MATERIALS

- 6 Euro pallets
- 4 double castors,
two with locking brake
- Wood glue
- Long screws
- Short screws

Weather protection varnish or
wood protection varnish or varnish for exterior use

For the backrests

Screws 7 cm (6 pcs. per side)

For the roof and rear wall

- 16 boards (15 cm wide, 2 cm thick)
- of which 7 approx. 1.30 m long (roof)
- 9 of which approx. 1.60 m long (back)

Or: If you want, you can also use wooden panels
to cover the back or to have a uniform roof surface.
If your beach chair is sheltered, a plywood board
may also be sufficient for the back wall.

Optional

- Folding hinges
- Bottle opener
- Handles for the footrest
- Transport handles

Tools

Crowbar, hammer, hacksaw, gloves, file, jigsaw, pencil
and ruler or folding rule, angle, cordless screwdriver,
table saw, sander and sandpaper, respiratory protection,
aluminium foil, paint spray system,
e.g. Universal Sprayer W 590 FLEXiO



BY THE WAY

You can find the complete instructions for
building the beach chair on our website:

[finish.wagner-group.com/
pallet-beach-chair](https://finish.wagner-group.com/pallet-beach-chair)



Building instructions for your beach chair: Step by step

Making a beach chair yourself is a slightly bigger project than
building a DIY chalkboard, for example. But don't worry: read
our assembly instructions carefully, watch the video from Sari's
Garage and keep calm and stay focused while assembling!
Then nothing can go wrong when building this garden furniture.

Step 1

Dismantling the Euro pallets

The first thing to do is to dismantle the Euro pallets.
It is best to use a crowbar to lift the outer EPAL blocks until you
can saw through the nails with a hacksaw. If the outer blocks are
already off, you can lever out the middle block. Do this with five
of the six pallets. Saw off protruding nails with the hacksaw –
then simply bend them off by hand. Caution: Be sure to wear
gloves here!

Now file down the sawn-off nails with a metal file until you can
run your hand over them without hurting yourself.



Step 2

The legs of the beach chair made from EPAL blocks

Use the EPAL blocks from the leftover pieces to build the legs of
the beach chair – and determine the height of the seat. Sari used
three blocks per leg (so twelve in total), because later the castors
will raise the beach chair even further. If you would also like
castors on the beach chair, include their height in the calculation!
Glue the three wooden blocks together with a good wood glue
and finally put them under the remaining complete pallet.
The wood glue must now be completely dry.

Would you like your DIY beach chair to have footrests and look
just like the one at Sari's Garage? Then prepare another leg
directly and glue it to the front in the middle of the pallet.



TIP

Also check that your cordless
screwdriver is charged. If it isn't,
this is your chance to do it!

TIP

Sari and Christian use only new Euro
pallets for their DIY pallet furniture!



Step 3

Screwing on the side panels

In order to be able to attach the sides flush to the seat, you will need leftover pieces of the pallets. Now you need to cut two boards so that they are flush with the seat. The pallet is also screwed flush to the side with the sawn board between the seat and the side part with plenty of screws. Screw the pallet on at the bottom as well, at the height of the EPAL blocks.

Sari and Christian have bevelled the extension of the side parts so that rain can drain off well. First, cut a pallet in half. Then draw a slope with an auxiliary board – for Sari it is 15 centimetres. Use the jigsaw to saw the pallet halves to size according to the guide lines. Now saw two boards for the connection of the side panel and the extension and screw them vertically with six screws per board. Repeat this step on the other side.



Step 4

Attaching the backrest

Place a pallet in the beach chair as you find it comfortable, for example slightly slanted. Screw the Euro pallet on from the outside. Place another pallet on top as a test and measure how high it needs to be to be flush with the side parts. Then saw the pallet to size with the jigsaw and screw this part to the side rests as well. If you also want to build the footrests, save the rest of the top pallet! Finally, Christian fixed the backrest at the bottom in three places at an angle with a screw – where the Euro pallet of the seat has the existing EPAL blocks.



Step 5

Attaching the roof

Saw the seven boards to size – in Sari's case it was approx. 1.30 m. However, it is best to measure again yourself! The couple from Sari's Garage have let the roof protrude a little at the front and back – you can decide if you want to do this also. Screw the boards (or the wooden panel) for the roof onto the top of the sides.

If you also want to attach a bevelled fascia: it is best to use a table saw with an adjustable angle to bevel the edge of the board. Pre-drill to prevent the wood from cracking, then simply screw the fascia to your roof head-on. So you have a small awning without having to deal with awning fabrics and a sewing machine!

If you also want to attach the back panelling later, now saw two boards to fit them directly under the roof on the back wall to fill the "gaps". You can screw the back panelling on here later.



Step 6

The footrests

If you did not glue on a fifth leg for the beach chair in the second step, but now still want the footrests, you can simply screw on the EPAL blocks. Also screw on the castors and then measure out what height the footrest should be.

Take the remaining piece of the backrest pallet and cut it in half. For the front piece, cut two wide and two narrow boards from the remaining pallet pieces. Lay a narrow one across as a connecting board in the lower third and screw it together.

If it matches the ideal height of your footrest, it looks best when the front surface of the footrest is flush with the seat surface and below with the EPAL blocks. Lay out the front surface, mark the place where the horizontal plane should be attached and screw the parts together exactly at this point.

TIP

Don't feel like assembling the footrests? Then you can also paint boxes in a matching colour and put them with your new pallet furniture – but the boxes are then bulkier because they cannot be stored under the seat like the built footrests.

Step 7

Sanding!

Now take a sander and suitable sandpaper and sand the entire beach chair once. Pay special attention to corners and edges and round them off, especially if you have sawn there. Take your time with this step and proceed carefully so that neither you or your children get splinters!

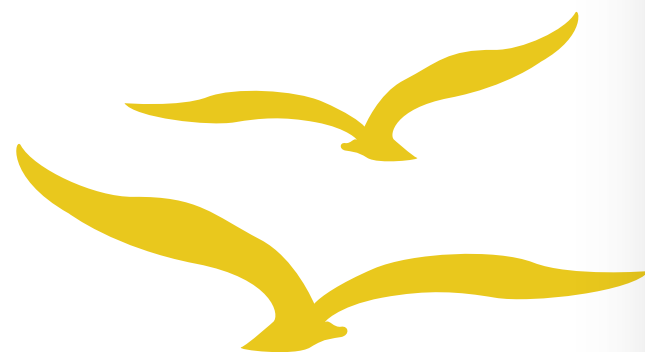
**Step 8**

Painting the beach chair with a WAGNER paint sprayer

First place something under the beach chair to protect the surroundings and wrap some aluminium foil around the castors. Then prepare the paint or varnish: stir until smooth, pour into the paint container and dilute by 10 % if necessary – the stirring rod included will help you here.

Adjust the amount of material and air and test the spray jet on a piece of cardboard – does it spray on smoothly and have no droplets of paint at the edge? Then it is perfect. If it looks uneven, change the settings and test again until you are satisfied. Only then is it time to spray the beach chair.

Then it's time to spray. Watch out: move smoothly and try to maintain the same angle and distance from the surface as much as possible. Don't forget to also spray the back panelling and paint (or varnish) the footrests for the beach chair.

**Step 9 (optional)**

Fitting the rear panel

The boards for the rear panel were just under 1.60 m long in Sari's and Christian's case, but here too it is best to measure again. Once all the wood has been treated, now attach two boards horizontally: one in the middle and one where there is a lot of empty space due to the sloping backrest. This way you can fix all the boards properly and the vertical boards still have a support. Then simply screw the boards on – this way you get a valuable back wall that also makes your little retreat quieter and no one can see through it.

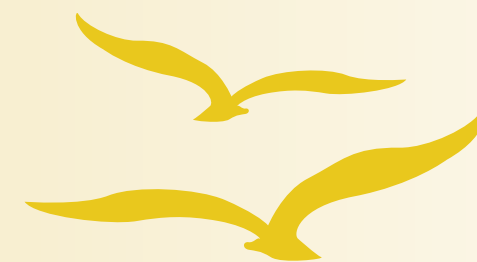
However, you can also leave the beach chair without the rear panelling – depending on which you prefer!

**Step 10 (optional)**

Bottle openers, folding tables and decoration

Sari and Christian cut and painted a leftover piece of the pallet for folding tables and then attached it with a locking folding hinge. Of course, you can freely choose the height and length of the folding tables here, just as it suits you best! The bottle openers are a chic but practical addition. And last but not least, you can of course attach any decoration to or in the beach chair that you like – such as the shell handles on the footrests. Make this piece of garden furniture a beach chair that will trigger holiday feelings in you!

The home-made beach chair is finished, the paint or varnish has dried, all the optional extras such as a bottle opener are in place? Then only one thing is missing: a pallet cushion! These cushions are usually filled with foam and made of sturdy fabric, making them ideal for outdoor use in the garden. Pick cushions in a colour that matches your beach chair – and we wish you lots of fun and relaxation in your garden!





Eva Brenner in the summer interview

On a beautiful summer's day, Eva Brenner tells us about her book on garden design, her labour-of-love project – the vicarage – and why she is glad to have a WAGNER spraying system at her side. With programmes like "Zuhause im Glück" and "Mein Zuhause richtig schön", the interior designer has been accompanying us on German television for more than 15 years. But what does she do to rest and recuperate? Eva Brenner reveals this and many other exciting details in an exclusive interview.

Eva, tell us about your private renovation project, your vicarage.

The vicarage is a huge project. That's why I put it off all the time. I'm on the road so much building for others that I don't get to do it myself (laughs). But it is a real labour of love. The house is quite old: it dates from 1863 and is a listed building, so of course there are a number of things that need to be taken into account and approved. I also have to submit a new planning application because I want to use the house differently than before and that is dragging on insanely. But I still have it in my mind's eye and I'm really looking forward to it and hope that it will happen at some point.

That sounds like a lot of work.

It really is. There are 3 floors, the attic needs to be converted and there are many windows and shutters to be painted and varnished. So there's a lot to do.

In any case, I hope you have a lot of fun.

I hope you're on board, because I could still use a little support. As I said, I mentioned it specifically, there are many shutters and many windows at the rectory. They all need to be painted. And what could be better than a Wagner sprayer? It's already at home waiting to be used. I just need a strong man who might help. :-)

Yes, well then I'll do that (both laugh).

I'll take your word for it.

Lovely! Completely different topic: Where do you get your inspiration for cool upcycling projects?

Sometimes it happens by chance. You have something in your hand, think a little longer and with a lot of imagination you come up with one or the other. But I also have to admit: I also look at colleagues on Instagram and on Pinterest. There's great inspiration and beautiful projects and that's how I sometimes get from one thing to another. So it's not just a matter of copying, but of getting inspiration and then developing something new from it.

What DIY ideas for the garden can we find in your new book?

Oh, these are very different projects. There are lights, then there is a raised bed made from an old cable drum, there is something to celebrate – bar tables, a beer tent set that is being transformed. The book does not necessarily have anything to do with the garden per se, but inspires individual design objects that fit the garden, but can also be used on a terrace, a balcony or indoors.

That sounds great! Talking about garden projects: do you prefer to use a paint spray system outside or a brush and roller?

So if I can come back to my vicarage... with all the shutters. They are about 2.40 metres high and have many individual slats. If you had to work on them with a brush or roller, you would never finish and would probably despair. And you know best how quickly this can be done with a paint sprayer. And then you can do something like that in one day. I'd say so, wouldn't you?

Absolutely! Big projects and a full working life are always a bit exhausting: how do you relax from your hectic workday in the summer?

So normally I would have to say that when I get home, I do a bit of DIY and come down. But honestly, I also love doing nothing, having dinner with friends and enjoying myself. I love to cook, but I also love to be cooked for. And a weekend trip like that is also very good for you.

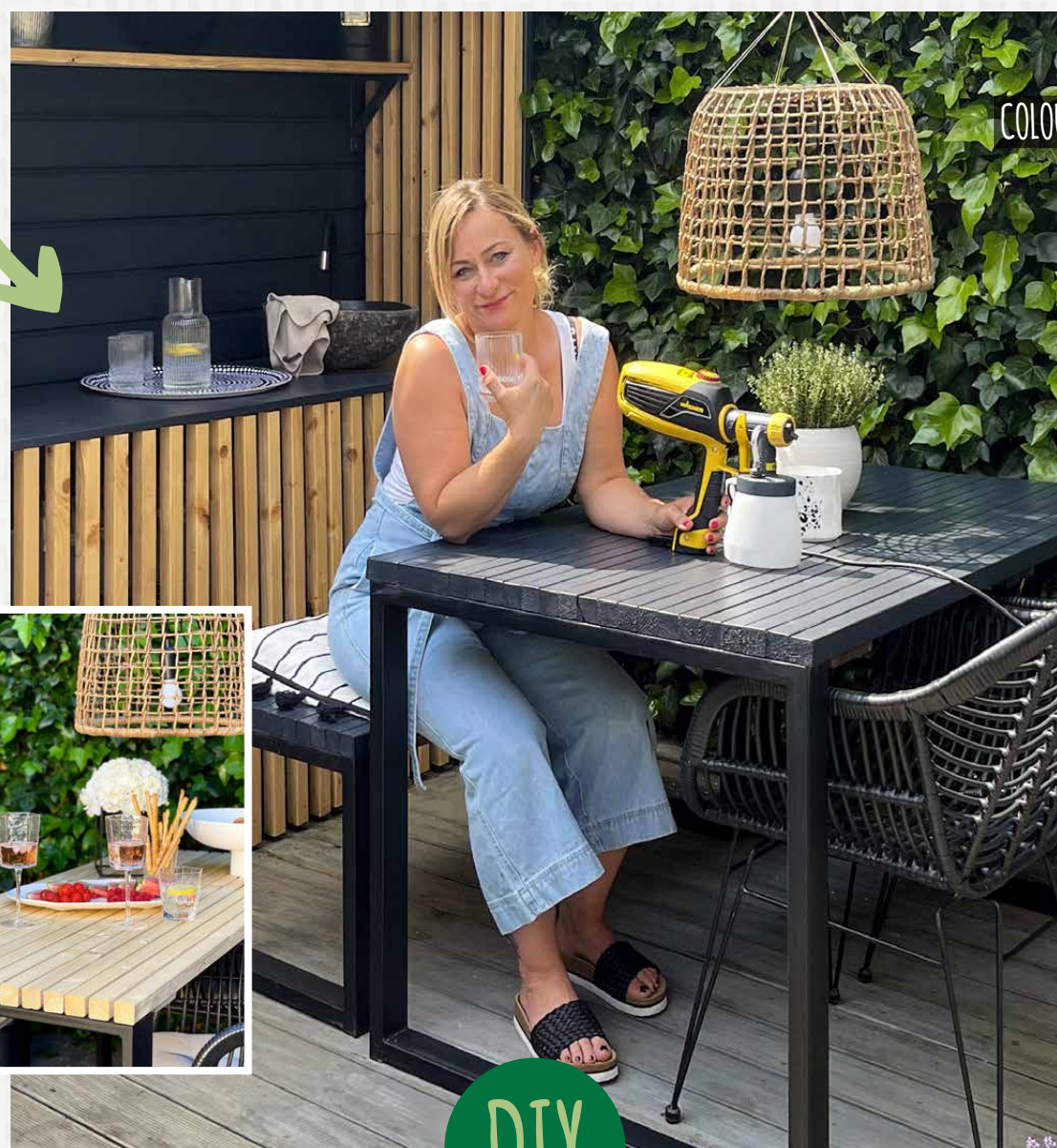
I agree with you there. Thank you so much for being with us Eva!

Thank you Dominik.



GARDEN TABLE BUILD IT YOURSELF

We'll show you how it's done.



COLOURFUL



NATURE

DIY

A barbecue with the family or a cool drink with friends: Do you also like to enjoy nice weather outside? We have the perfect DIY idea for you! With a DIY garden table, you can conjure up a modern Scandinavian-style garden without breaking the bank. Our DIY and lifestyle blogger Aneta shows you how it's done:



1

Prepare a suitable workplace. Make sure to also protect surrounding areas from paint and off you go:

Step 1

Cutting slats to size

First, take the slats and shorten them to the desired length with a hand saw or jigsaw. Think about how much space you want to leave between the slats. In our example, Aneta is making two tables – one larger and one smaller. She always cuts off about 0.5 m of the 2 m long slats and uses the rest for another project. You can also have the slats cut to the desired length directly in the DIY store.



LIST OF MATERIALS

Table legs or runners 2 each
(table and bench)

Planed slats 3.4 cm x 3.4 cm x 200 cm
approx. 15 for the table
and approx. 6 for the bench

Suitable screws

2 – 3 boards for the screw connections
1.8 cm x 7 cm x 200 cm

Masking material

Tools

Cordless screwdriver

cut

Sander and sandpaper

Spray system (e.g. W 690 FLEXiO)

Step 2

Screwing the slats together

To give your table top stability, take the long boards and cut them into small boards. You will need three boards for the table top. If your table is e.g. 100 cm wide, you should cut the cross board to 98 cm. Before screwing everything together, lay the slats on a flat surface and check that the pre-drilled holes in the boards are not in spaces. Now it is best to screw the first and last slat to the three wooden boards first and work your way inwards. Leave enough space between the end of the table and the boards to attach the table legs.



Step 3

Attaching the table legs

Aneta is making two tables at the same time, one in a natural look and one in anthracite, which she wants to give to friends. She has chosen different sizes for her square runners – 30 cm wide for the bench and 60 cm for the table and 40 cm x 90 cm. So you can choose precisely how high and wide you want your table to be, thanks to the size of the runners. The width is important depending on the table top made from the wooden slats. Now screw the table legs to your dining table top using a washer between the screw and the leg.



Step 4

Spraying

Now the paint spray system comes into play. Aneta worked with her W 690 FLEXiO. In her example, she assembled everything first. If you also want to do this, you should mask the table legs well. For the natural variant, use a glaze or a clear varnish for outdoor use. For a coloured version, Aneta uses an anthracite-coloured, water-based weather protection varnish.

TIP

Aneta's suggestion is to spray the table without the legs attached. She screwed everything together first in her instructions and then had to tape the table legs, more about that in step 4.

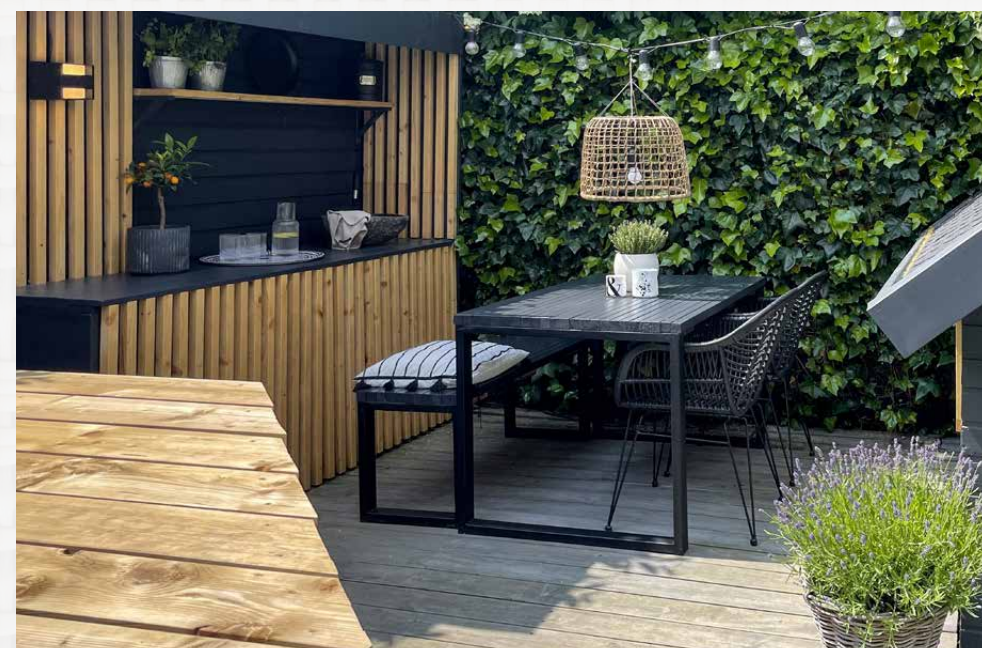
TIP

The garden table should be reasonably weather resistant. The paint or varnish protects the wood and makes it more resilient. That's why Aneta carefully paints the planed pine slats. For maximum protection, it is best to get a rain cover for your table and to store it during the autumn and winter.



DIY

You're done! Aneta is very happy with her paint sprayer. In addition to the W 690 FLEXiO, she also owns a W 590 FLEXiO and sprays everything around the house and garden. Since she often makes projects with Scandinavian-style wooden slats, she can really get into every nook and cranny with her paint sprayer. Especially between the wooden slats – where it used to take her forever with a brush. The paint sprayer is therefore a real asset for her. If you want to see more projects by Aneta, have a look at our project finder or directly at Anetas_Leben.





Visit our website for hints, instructions and advice for applying the perfect coat of paint:
finish.wagner-group.com/project-ideas



Are you planning to decorate or renovate your home? Make your own garden furniture? Paint bright colours on the wall or make creative decoration ideas? Whatever the item you think deserves a new coat of paint, **do it easily yourself.**

FINISH

The magazine for inspiration, decoration and do-it-yourself.